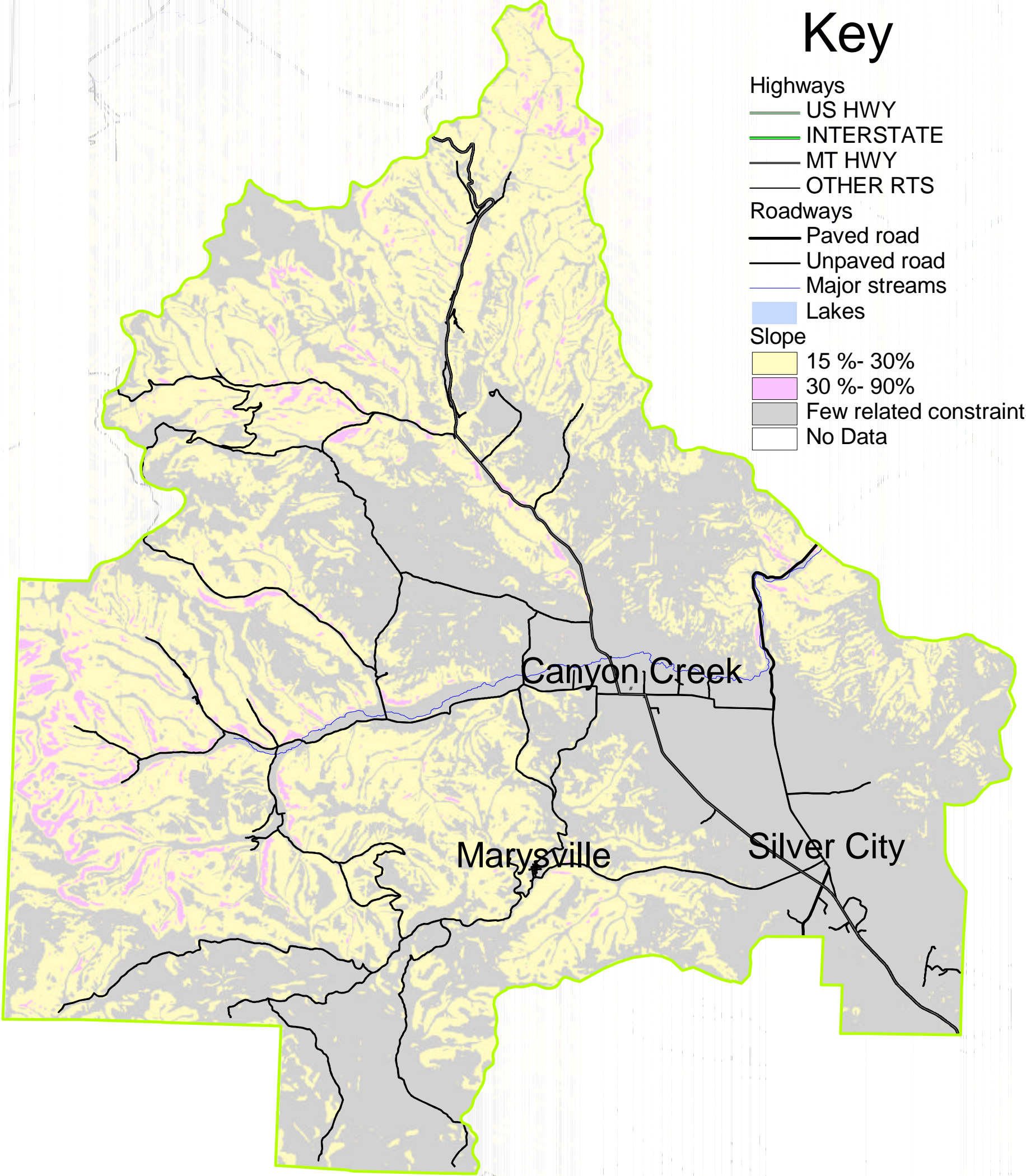


# Steep Slopes Marysville - Canyon Creek Planning Area

## Key

- Highways
  - US HWY
  - INTERSTATE
  - MT HWY
  - OTHER RTS
- Roadways
  - Paved road
  - Unpaved road
  - Major streams
- Lakes
  - Lakes
- Slope
  - 15 %- 30%
  - 30 %- 90%
  - Few related constraints
  - No Data



Data source: L&C GIS calculations derived from the USGS 1:24,000 scale digital elevation model.

data filename: g:\natural\slope

0 1 2 3 4 5 Miles

